

**EXPLORATOR RESOURCES INTERCEPTS ADDITIONAL HIGH GRADE COPPER-GOLD  
MINERALIZATION AT EL ESPINO-VENUS**

*Gold Results Include 6m of 3.15g/t and 2m of 70.9 g/t  
Oxide Copper Results Include 32m of 0.97%, 74m of 0.77%, and 74m of 0.62%*

**TORONTO, ONTARIO (September 25, 2007) – Explorator Resources Inc. (TSX Venture Exchange: EXO)** has continued to intersect wide zones of oxide copper and new zones of high-grade gold mineralization at its ongoing 25,000m Phase Two drilling program at the El Espino-Venus Project in Chile. To date more than 50 drill holes have been completed.

These latest drill holes received are from the Ravanales oxide area which hosts numerous, shallow underground copper-gold workings. These historic workings done by previous operators have made the recovery of drill core extremely challenging resulting in much of this area remaining untested. Explorator has realized improved sample recovery using reverse circulation (RC) drill rigs to test where diamond drilling has previously failed to penetrate due to the presence of workings.

Drilling has continued to realize significant, high grade gold intercepts. These gold intersections at Ravanales are up to 250 meters north of those in the Rachel zone (see press release dated September 12, 2007).

**New gold intercepts include the following:**

HOLE NO.	INTERCEPT (m)	WIDTH (m)	Au g/t	Cu %
<b>MXE-37</b>	<b>38 to 40</b>	<b>2</b>	<b>1.94</b>	<b>0.44</b>
	<b>68 to 70</b>	<b>2</b>	<b>5.02</b>	<b>1.77</b>
<b>MXE-39</b>	<b>46 to 48</b>	<b>2</b>	<b>3.20</b>	<b>4.33</b>
	<b>72 to 74</b>	<b>2</b>	<b>8.24</b>	<b>0.36</b>
<b>MXE-41</b>	<b>88 to 90</b>	<b>2</b>	<b>70.80</b>	<b>0.07</b>
<b>MXE-47</b>	<b>58 to 64</b>	<b>6</b>	<b>3.15</b>	<b>0.25</b>

David O'Connor, President and CEO of Explorator stated: "The results of these new drill holes continue to give us confidence in the presence of substantial "ore grade" copper-gold mineralization in the recently identified oxide zones above and adjacent to the sulphide mineralization. The high-grade gold showing in this second zone is intriguing and further investigation has become a priority. The shallow, oxide intercepts in the Ravanales area are particularly encouraging as they add to our knowledge of potentially open-pittable, low-cost, SXEW treatable resources. We will continue to test the gold zones while outlining the copper bodies."

The company intends to continue fast-track drilling the area and expects that the Ravanales zone will make a significant contribution to the initial NI 43-101 compliant resource estimate being planned, focusing on a portion of the Main Copper Zone (see Press Release September 20, 2007). There are now a total of six drill rigs operating at El Espino-Venus.

Significant new intercepts in the Ravanales copper oxide zone are listed below. Oxide ore is generally cheaper to treat, both in terms of capital and operating costs, allowing the potential for lower cut-off grades.

**Ravanales Copper oxide zone results include the following:**

**Note - intercepts which are sulphides are indicated**

HOLE NO.	INTERCEPT (m)	WIDTH (m)	Cu %	Au g/t
<b>MXE-16</b>	<b>90 to 99</b>	<b>9</b>	<b>0.49</b>	<b>-</b>
	<b>138 to 147</b>	<b>9</b>	<b>0.43</b>	<b>-</b>
<b>MXE-34</b>	<b>46 to 72</b>	<b>26</b>	<b>0.70</b>	<b>-</b>
<b>MXE-35</b>	<b>106 to 180</b>	<b>74</b>	<b>0.62</b>	<b>-</b>
	<b>with</b>	<b>32</b>	<b>0.97</b>	<b>-</b>

<b>MXE-36</b>	<b>34 to 78</b>	<b>44</b>	<b>0.50</b>	<b>-</b>
	<b>with</b>	<b>12</b>	<b>0.83</b>	<b>-</b>
<b>MXE-37</b>	<b>58 to 70</b>	<b>12</b>	<b>0.90</b>	<b>0.99</b>
	<b>with</b>	<b>6</b>	<b>1.26</b>	<b>1.89</b>
<b>MXE-39</b>	<b>0 to 74</b>	<b>74</b>	<b>0.77</b>	<b>0.40</b>
<b>MXE-40</b>	<b>0 to 52</b>	<b>52</b>	<b>0.30</b>	<b>0.09</b>
	<b>with</b>	<b>10</b>	<b>0.60</b>	<b>0.19</b>
<b>MXE-41</b>	<b>88 to 90</b>	<b>2</b>	<b>-</b>	<b>70.8 (sulphide)</b>
	<b>114 to 118</b>	<b>4</b>	<b>0.93</b>	<b>0.14</b>
<b>MXE-42</b>	<b>no significant</b>	<b>results</b>	<b>stopped before</b>	<b>target</b>
<b>MXE-43</b>	<b>86 to 92</b>	<b>6</b>	<b>1.49</b>	<b>0.40</b>
	<b>110 to 136</b>	<b>26</b>	<b>0.33</b>	<b>-</b>
	<b>with</b>	<b>6</b>	<b>0.85</b>	<b>-</b>
<b>MXE-45</b>	<b>no significant</b>	<b>results</b>	<b>stopped at</b>	<b>16 meters</b>
<b>MXE-46</b>	<b>0 to 32</b>	<b>32</b>	<b>0.21</b>	<b>-</b>
<b>MXE-47</b>	<b>46 to 52</b>	<b>6</b>	<b>0.44</b>	<b>-</b>
	<b>56 to 68</b>	<b>12</b>	<b>0.47</b>	<b>1.64</b>
	<b>with</b>	<b>6</b>	<b>0.25</b>	<b>3.15</b>
<b>MXE-48</b>	<b>0 to 46</b>	<b>46</b>	<b>0.80</b>	<b>-</b>
<b>MXE-49</b>	<b>0 to 22</b>	<b>22</b>	<b>0.31</b>	<b>-</b>
	<b>28 to 86</b>	<b>58</b>	<b>0.49</b>	<b>-</b>
	<b>with</b>	<b>28</b>	<b>0.64</b>	<b>-</b>
<b>MXE-70</b>	<b>0 to 62</b>	<b>62</b>	<b>0.74</b>	<b>-</b>
	<b>with</b>	<b>20</b>	<b>1.47</b>	<b>-</b>
<b>MXE-71</b>	<b>0 to 52</b>	<b>52</b>	<b>0.66</b>	<b>-</b>
<b>MXE-72</b>	<b>38 to 64</b>	<b>26</b>	<b>0.31</b>	<b>-</b>
	<b>with</b>	<b>10</b>	<b>0.43</b>	<b>-</b>
<b>MXE-73</b>	<b>20 to 36</b>	<b>16</b>	<b>0.18</b>	<b>-</b>
	<b>Note: stopped</b>	<b>in workings</b>	<b>before main</b>	<b>target</b>
<b>MXE-74</b>	<b>36 to 64</b>	<b>28</b>	<b>0.83</b>	<b>0.25</b>
<b>MXE-75</b>	<b>40 to 100</b>	<b>60</b>	<b>0.42</b>	<b>-</b>
	<b>with</b>	<b>12</b>	<b>0.89</b>	<b>0.4</b>
<b>MXE-76</b>	<b>32 to 90</b>	<b>58</b>	<b>0.52</b>	<b>-</b>
	<b>with</b>	<b>32</b>	<b>0.77</b>	<b>-</b>
<b>MXE-77</b>	<b>66 to 82</b>	<b>16</b>	<b>1.32</b>	<b>-</b>
	<b>82 to 86</b>	<b>4</b>	<b>0.61</b>	<b>0.22 (sulphide)</b>
	<b>86 to 100</b>	<b>14</b>	<b>0.27</b>	<b>-</b>
<b>MXE-80</b>	<b>48 to 54</b>	<b>6</b>	<b>0.48</b>	<b>-</b>

**FIGURE 1 – EL ESPINO PROSPECT AREAS**

**FIGURE 2  
RAVANALES OXIDE ZONE**

**ABOUT EXPLORATOR RESOURCES INC.**

Explorator Resources is a Canadian-based mining exploration company focused on building a strong position of copper-gold projects in South America. Explorator is initially concentrating its efforts in the mineral rich Cordillera de la Costa province in Chile. The Company's El Espino-Venus Project lies within this prolific copper-gold mineral area and is central to an important cluster of "Candelaria-style" copper-gold deposits. El Espino-Venus is located in the Illapel district, approximately 3.5 hours drive north of Santiago. The El Espino-Venus block covers 11 square kilometers and is host to major gold and copper mineralized structures on which nine small operating mines have been developed.

## **CONTACT INFORMATION**

Explorator Resources Inc.  
Leslie Powers  
(416) 775-7540  
Email: [info@explorator.ca](mailto:info@explorator.ca)  
Website: [www.explorator.ca](http://www.explorator.ca)

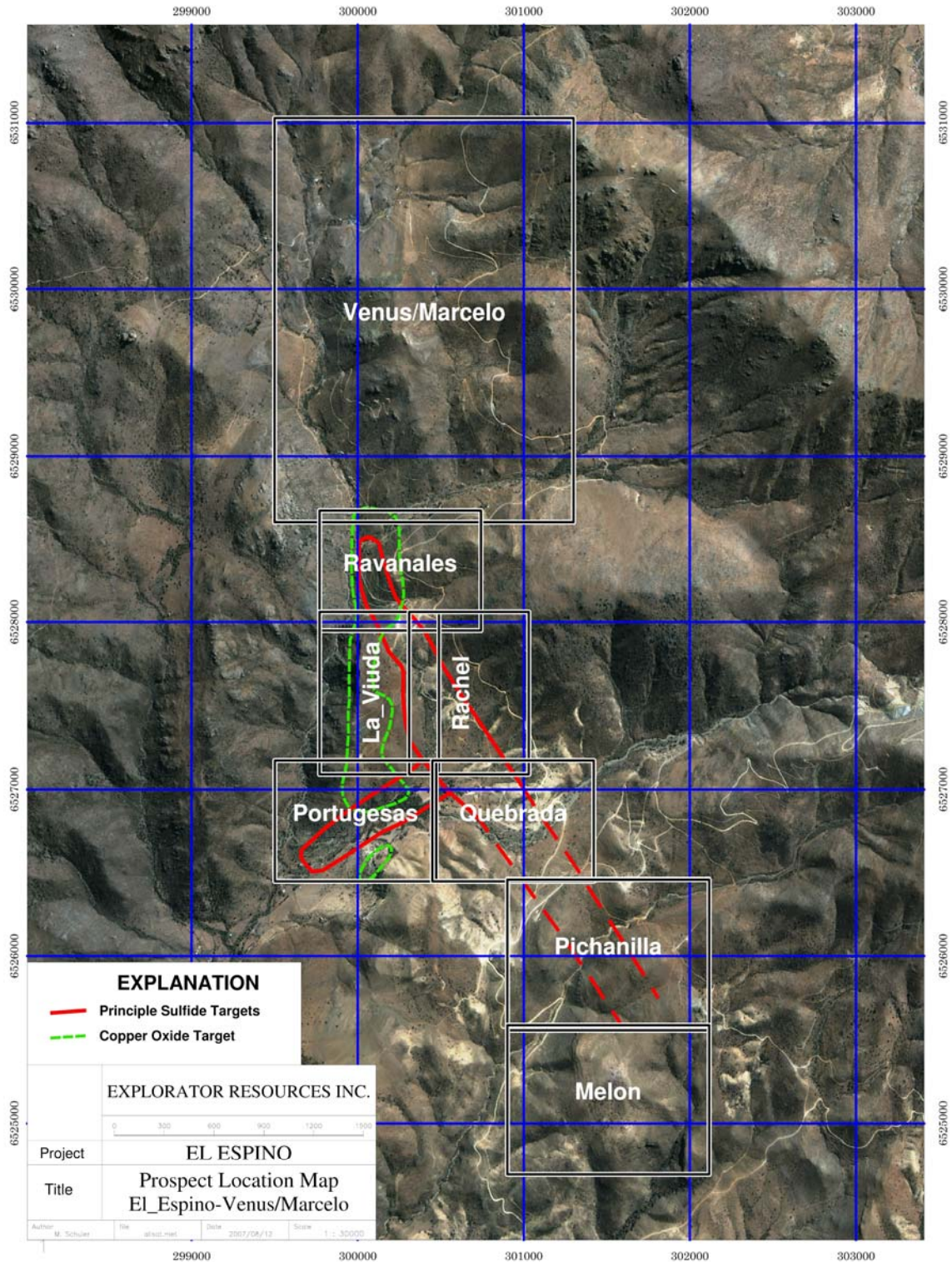
## **REGULATORY FOOTNOTE**

Mr. Michael Schuler, Explorator Resources' Vice President, Exploration is the "Qualified Person" as defined under the National Instrument 43-101 and is responsible for the scientific and technical work on Explorator's exploration program and is responsible for reviewing the technical disclosure in this news release. All analytical work has been completed by ALS Chemex of La Serena in Chile; ALS Chemex is a respected international analytical service which is accredited with NATA and complies with standards of ISO 9001:2000 and ISO17025:1999. They employ a variety of international standards for quality control purposes. Samples are transported from the project to the ALS Chemex laboratory in La Serena sample by Company personnel or a reputable commercial carrier. All analytical testing is performed utilizing a variety of industry standard analytical techniques, including: (1) ALS Analytical Code Au-ICP22 (Au 50g fire assay with ICP-AES finish), (2) ALS analytical code Au-GRA22 (Au 50g fire assay with a gravity finish), (3) ALS analytical code ME-ICP61 (33 element analysis using a four acid digestion and ICP-AES analysis), (4) ALS analytical code Cu-AA62 (ore grade copper analysis using a four acid digestion and an AAS finish. All diamond drill core is geologically logged, cut in half using a diamond saw and sampled by Company geologists in one (1) to three (3) meter sample intervals depending on visual grade estimates; the archive portion of the sample is securely stored at the company's core shed adjacent to the office in the town of Illapel.

The Company has initiated a QA/QC program consisting of utilizing standards, duplicate and blank samples and laboratory cross-checks and routinely repeats sample analysis.

## **FORWARD-LOOKING INFORMATION**

Certain statements contained in this news release may contain forward-looking information within the meaning of Canadian securities laws. Such forward-looking information are identified by words such as "estimates", "intends", "expects", "believes", "may", "will" and included, without limitation, statements regarding the company's plan of business operations, production levels and costs, potential contractual arrangements and the delivery of equipment, receipt of working capital, anticipated revenues, mineral reserve and mineral resource estimates, and projected expenditures. There can be no assurance that such statements will prove to be accurate; actual results and future events could differ materially from such statements. Factors that could cause actual results to differ materially include, among others, metal prices, risks inherent in the mining industry, financing risks, labour risks, uncertainty of mineral reserve and resource estimates, equipment and supply risks, regulatory risks and environmental concerns. Most of these factors are outside the control of the company. Investors are cautioned not to put undue reliance on forward-looking information. Except as otherwise required by applicable securities statutes or regulation, the company expressly disclaims any intent or obligation to update publicly forward-looking information, whether as a result of new information, future events or otherwise.



**EXPLANATION**

- Principle Sulfide Targets
- Copper Oxide Target

EXPLORATOR RESOURCES INC.



Project **EL ESPINO**

Title **Prospect Location Map  
El\_Espino-Venus/Marcelo**

Author M. Schuler Date 29/07/04/12 Scale 1 : 30000

299000 300000 301000 302000 303000

6531000  
6529000  
6528000  
6527000  
6526000  
6525000

6531000  
6530000  
6529000  
6528000  
6527000  
6526000  
6525000

