

Gold & Silver Marketwatch

Daily Update: Wednesday, April 30, 2008

Strategist Contact Information

Camilla Sutton, CFA, CMT Stephen Malyon, CFA
 Camilla_Sutton@Scotiacapital.com Stephen_Malyon@Scotiacapital.com

Trading Contacts

Reuters MMCN or (212)225-6200
 Stephen Abbriano—Stephen_Abbriano@scotiacapital.com
 Robert Lockwood—Robert_Lockwood@scotiacapital.com

Market Commentary

Gold opened at 869.50/870.50 in New York. Q1 GDP surpassed expectation growing at 0.5%q/q; however the underlying details continued to point to a deteriorating economic backdrop. The USD weakened on the back of ongoing economic concerns, month end flows and in anticipation of the Fed, accordingly gold rallied reaching a high of 876.20/877.20. Funds later sold it through the London fix and into the early afternoon on the back of larger than anticipated oil inventories, pushing the metal to support near 867.00. The market was fairly quiet for the remainder of the session as investors stepped back waiting for the FOMC rate decision. Gold closed at 862.80/863.80. As expected the Fed cut interest rates by 25bps and toned down their dovish commentary. Gold rallied after the close (as we write it has reached an after market high of 878.60/879.60).

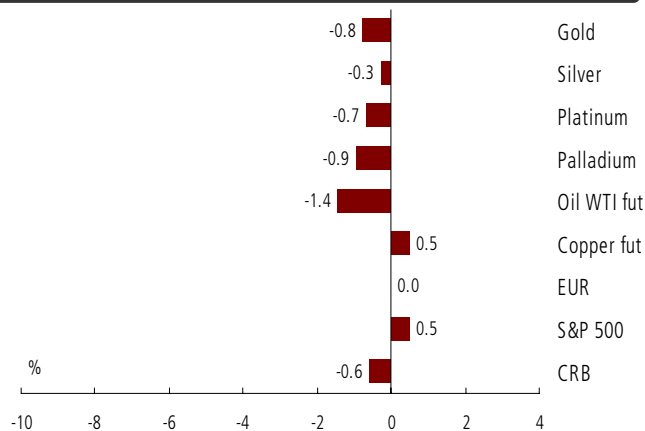
Silver opened at 1653.00/1657.00 and climbed to a high of 1676.00/1680.00 on the back of a weaker USD and rallying oil prices. However this move was short lived as the metal followed oil prices lower finding support near 1657.00. The metal traded within a range throughout much of the session, finally settling at 1650.00/1654.00.

Technical Commentary

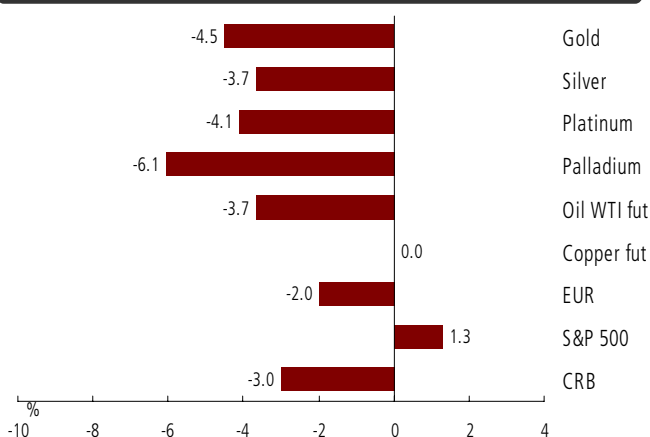
Gold - Price action leading into the Fed decision continued to be bearish, as gold dropped further below support (as we write gold has recovered some lost ground, which has slightly improved the charts). Near-term support lies at historical congestion of 848.00, followed by the 50% retracement of the June to March up move at 836.10; while resistance comes in first at historical congestion of 883.50, followed by the 9-day moving average of 894.87.

Silver - On the intraday chart, silver traded above the 15hr moving average for most of the North American session (and continues to), this implies further near-term upside for silver. As we write support of 16.34 continues to hold, which is an encouraging sign for the bulls; however there is still a long way to go before technicals provide outright buy signals for silver. Support lies at 16.34, while resistance comes in first at 16.80 (price action is currently flirting with a break of this), followed by the 100-day moving average of 17.11.

1-Day Commodity Moves



5-Day Commodity Moves



4/30/08 15:41 - Time above charts last updated - Source: Bloomberg

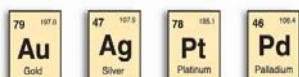
Gold, Silver, Platinum & Palladium

	Gold	Silver	Platinum	Palladium
Open	869.50/870.50	16.53/16.57	1,924	426.25
High	876.20/877.20	16.76/16.80	1,938	428.25
Low	862.00/863.00	16.49/16.53	1,907	412.75
Close / Last Mid*	862.80/863.80	16.50/16.54	1,915	418.25
London Fix AM	867.75	16.470	1,923	417.00
London Fix PM	871.00	-	1,929	420.00
Handy Harman (Base)	871.00	16.630	1,929	420.00
Gold / Silver Ratio	52.9	NA	NA	NA
Open Interest	Gold OI	One day ch	Silver OI	One day ch
COMEX	429,670	10,618	126,504	(863)
CBOT	<u>12,451</u>	<u>433</u>	<u>3,568</u>	<u>(38)</u>
Total	442,121	11,051	130,072	(901)

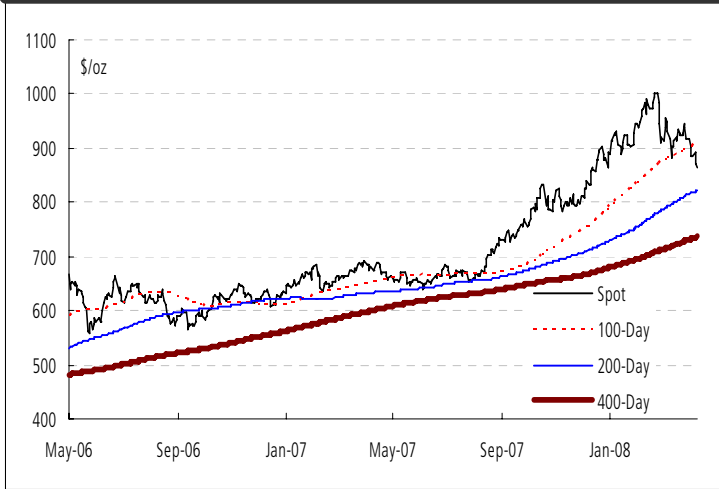
Technical Levels, etc.

	Gold	Silver	Platinum	Palladium
Pivot	878.09	16.760	1,936	425.50
Primary Support (Buy)	862.36	16.470	1,899	408.75
Primary Resistance (Sell)	893.38	17.131	1,965	438.25
HBOP	924.41	17.792	2,031	467.75
LBOP	831.33	15.808	1,833	379.25
Bollinger Band Upper	954.27	18.621	2,071	473.13
Bollinger Band Mid	911.47	17.538	1,997	447.68
Bollinger Band Lower	868.68	16.455	1,922	422.22
Relative Strength 14 Day	32	37	39	32

Close/last mid refers to the spot closing floor price in gold and silver, and spot's last mid price as provided by Bloomberg in platinum & palladium spot. All other data provided by Bloomberg. Actual market levels may have differed.



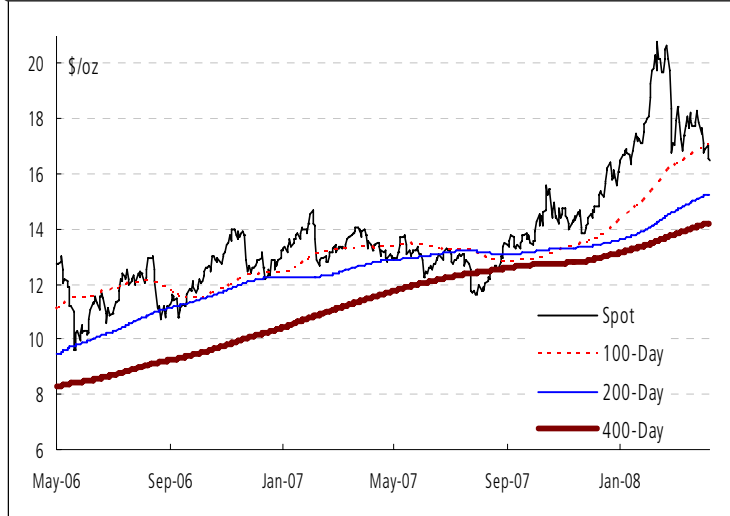
Gold: 2-Year Close with Moving Averages



Gold: 2-Month Candlesticks



Silver: 2-Year Close with Moving Averages



Silver: 2-Month Candlesticks



Source: Bloomberg - which can differ slightly from market spot prices

Moving Averages

	Gold	Silver	Platinum	Palladium
5 Day MA	879.97	16.750	1,946	430.35
10 Day MA	899.26	17.210	1,986	441.98
20 Day MA	911.47	17.540	1,997	447.68
30 Day MA	914.99	17.530	1,981	445.78
60 Day MA	933.91	18.170	2,026	469.97
100 Day MA	906.07	17.110	1,849	431.42
200 Day MA	822.00	15.280	1,606	391.98

FX Majors

CAD	1.0071
EUR	1.5613
GBP	1.9882
CHF	1.0363
AUD	0.9432
ZAR	7.5607
JYP	104.03
as of: 4/30/2008 16:04	

Markets

CRB	409.27
DJAIG	208.55
Crude (fut)	114.56
S&P 500	1,385.51
US 10 Yr	3.74
US 30 Yr	4.48
CDN 10 Yr	3.60
as of: 4/30/2008 16:04	

This report has been prepared by ScotiaMocatta and is not intended for use by private individuals. The ScotiaMocatta trademark represents the precious metals business of The Bank of Nova Scotia. The Bank of Nova Scotia, a Canadian chartered bank, is incorporated in Canada with limited liability. Opinions, estimates and projections contained herein are subject to change without notice. The information and opinions contained herein have been compiled or arrived at from sources believed reliable but no representation or warranty, express or implied, is made as to their accuracy or completeness. Neither the Bank of Nova Scotia, its affiliates, employees or agents accepts any liability whatsoever for any loss arising from the use of this report or its contents. The Bank of Nova Scotia, its affiliates, employees or agents may hold a position in the products contained herein. This report is not a direct offer financial promotion, and is not to be construed as, an offer to sell or solicitation of an offer to buy any products whatsoever. The Bank of Nova Scotia is authorized and regulated by The Financial Services Authority.

